



THELANDING

Class "A" Office Space For Sublease



115 FAIRCHILD STREET, SUITE 200
DANIEL ISLAND, SC

- Suite 200 - 9,977 RSF
- Master Lease Term through August 2028
- Potential Expansion up to 14,382 RSF
- \$29.50/RSF, Full Service

MARK A. MATTISON, II CCIM SIOR
Executive Vice President
DIR: +1 843 437 1545
mark.mattison@bridge-commercial.com

PETER FENNELLY, SIOR, MCR, SLCR
President
DIR: +1 843 425 0186
peter.fennelly@bridge-commercial.com

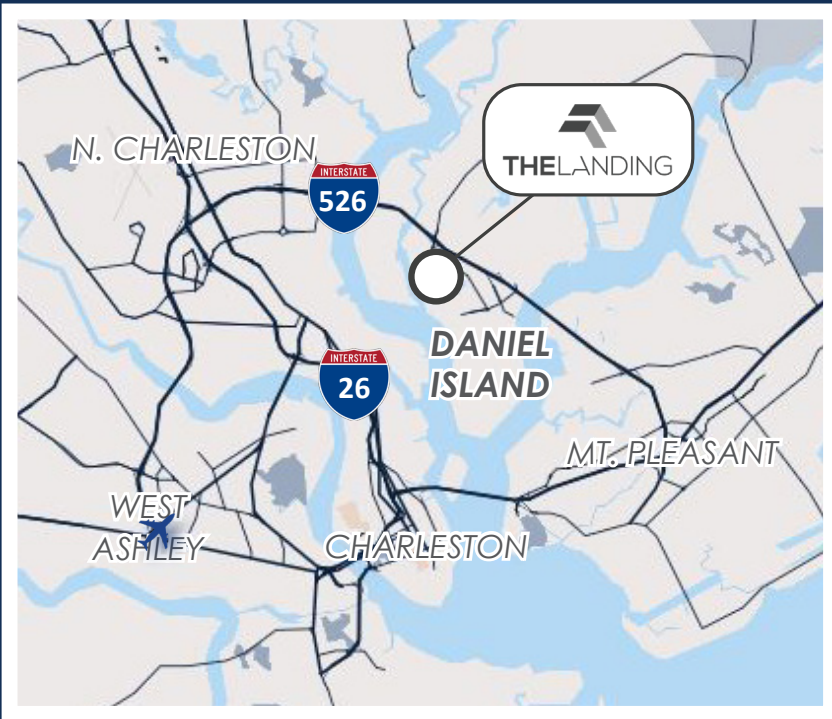
COLBY FARMER
Associate
DIR: +1 978 998 9243
colby.farmer@bridge-commercial.com

CLICK HERE TO WATCH PROPERTY VIDEO



**CORPORATE OFFICE SPACE
ON DANIEL ISLAND**

The Landing is one of the most unique office building opportunities in the Charleston, SC market offering abundant on-site parking. Excellent access to Interstate I-526 heading east and west. Within walking distance to numerous amenities ranging from dining, retail trades, financial institutions and residential units. Proximate to high profile office users including BLACKBAUD and BENEFIT FOCUS.



**HIGH END
INTERIOR
FINISHES**



**EASILY
ACCESSIBLE**



**MINUTES TO
AMENITIES**



**ABUNDANT
PARKING**

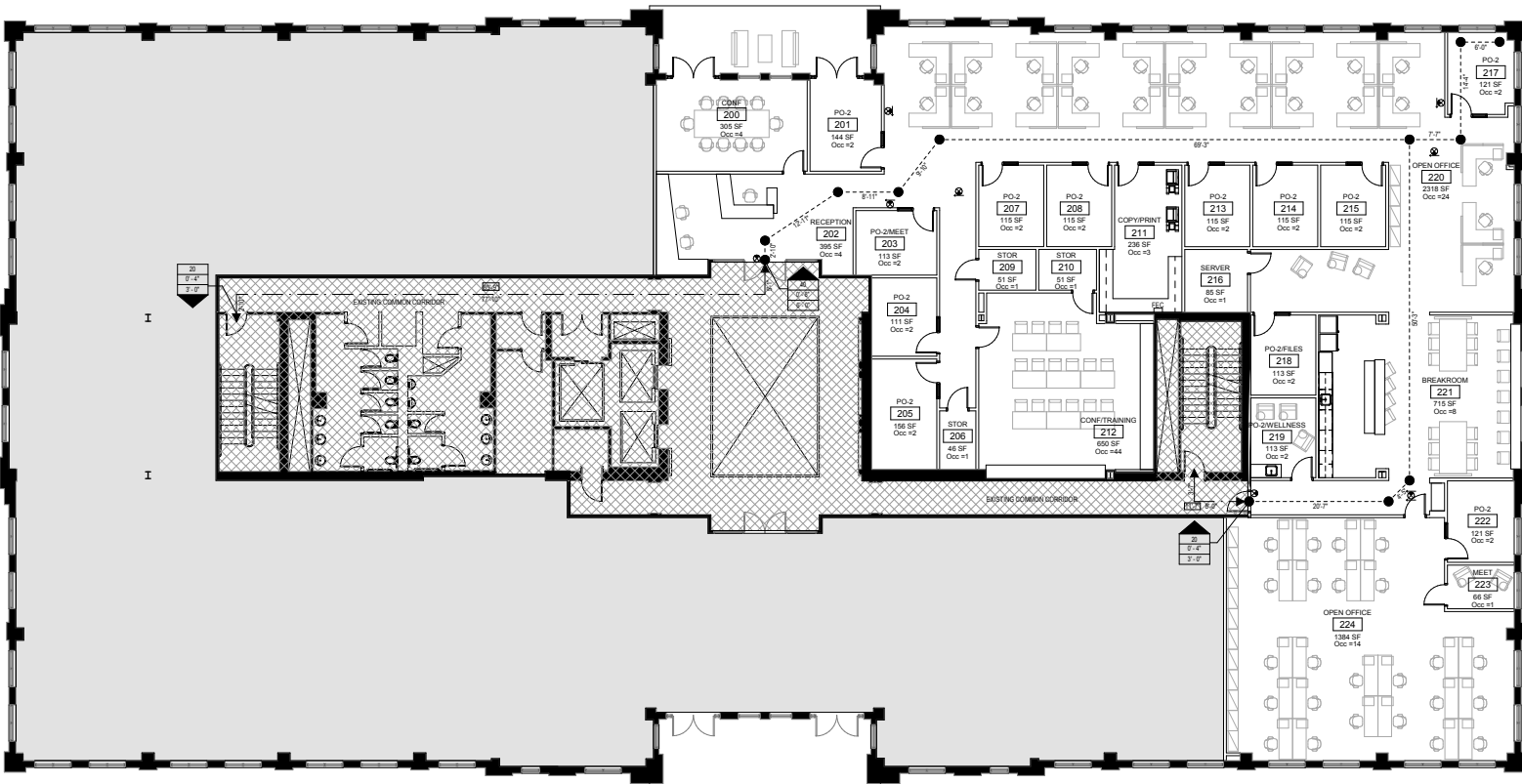


**NEARBY PARKS
& TRAILS**



SUITE 200 SPACE PLAN

9,977 RSF



SUITE 270 EXPANSION SPACE

4,405 RSF





A LIFESTYLE FOR BUSINESSES & EMPLOYEES
BEFORE, DURING & AFTER HOURS



AMENITY-RICH
LOCATION

- | RESTAURANTS (R) | HOTELS (H) | BANKS (B) | RETAIL & SERVICES (S) |
|------------------------------|---------------|----------------------|-------------------------------|
| Agaves Cantina | Hampton Inn | BB&T | Circle K |
| Ali Baba Deli & Catering | Home 2 Suites | Federal Credit Union | Cooper River Cycles |
| Bin 526 | | FineMark Bank | Daniel Island Computer Doctor |
| Blondies Bagels & Cafe | | First Citizens Bank | Eagan's Spirits |
| Daniel Island Grill | | SunTrust Bank | Envy Salon & Beauty Boutique |
| Dragon Palace Chinese Bistro | | Synovus Bank | Lucia's Pet Shop |
| Dockery's | | Wells Fargo ATM | O2 Fitness |
| Honeycomb Cafe | | | Paisley of Daniel Island |
| Laura Alberts | | | Refuel |
| Orlando's Brick Oven Pizza | | | |
| Ristorante LIDI | | | |
| Sermet's Courtyard | | | |
| Starbucks | | | |
| Sweets by the Beach | | | |
| Tropical Smoothie Cafe | | | |



FOR SUBLEASE

**115 FAIRCHILD STREET, SUITE 200
CHARLESTON, SC 29492**

MARK A. MATTISON, II CCIM SIOR

Executive Vice President

DIR: +1 843 437 1545

mark.mattison@bridge-commercial.com

PETER FENNELLY, SIOR, MCR, SLCR

President

DIR: +1 843 425 0186

peter.fennelly@bridge-commercial.com

COLBY FARMER

Associate

DIR: +1 978 998 9243

colby.farmer@bridge-commercial.com

BRIDGE COMMERCIAL

25 Calhoun Street, Suite 220

Charleston, SC 29401

Tel: +1 843 535 8600



BRIDGE-COMMERCIAL.COM

Bridge Commercial makes no guarantees, representations or warranties of any kind, expressed or implied, including warranties of content, accuracy and reliability. Any interested party should do their own research as to the accuracy of the information. Bridge Commercial excludes warranties arising out of this document and excludes all liability for loss and damages arising out of this document.