

# 1039 LINCOLN AVENUE

FOR SUBLEASE  
N. CHARLESTON | SC 29405



**BRIDGE  
COMMERCIAL**



**7,425 SF | WAREHOUSE SPACE AVAILABLE | HEAVY INDUSTRIAL**

**JOHN BEAM**  
Senior Associate  
+1 843 810 6868

**BROOKS U. COURTNEY**  
Brokerage Associate  
+1 859 327 8749

**HAGOOD S. MORRISON**  
Vice President  
+1 843 830 9108

**HAGOOD MORRISON MBA SIOR**  
Executive Vice President  
+1 843 270 5219

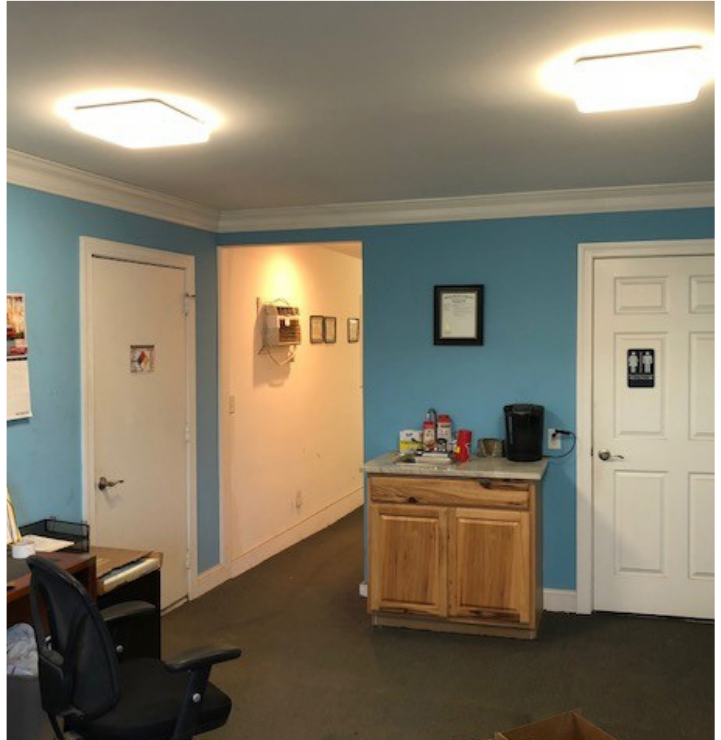
# 1039 LINCOLN AVENUE

## WAREHOUSE SPACE AVAILABLE



**BRIDGE**  
COMMERCIAL

Lease Rate:	\$10 PSF Modified Gross
Total SF:	7,425 SF
Office SF:	500 SF
Construction:	Metal, Clear Span
Clear Height:	18'
Loading Doors:	2 Dock High, 4 Drive-In
Warehouse Lighting:	Flourescent & skylights
Power:	3 Phase Service
Zoning:	Heavy Industrial
Notes:	The primary lease for this property expires 2/28/2020



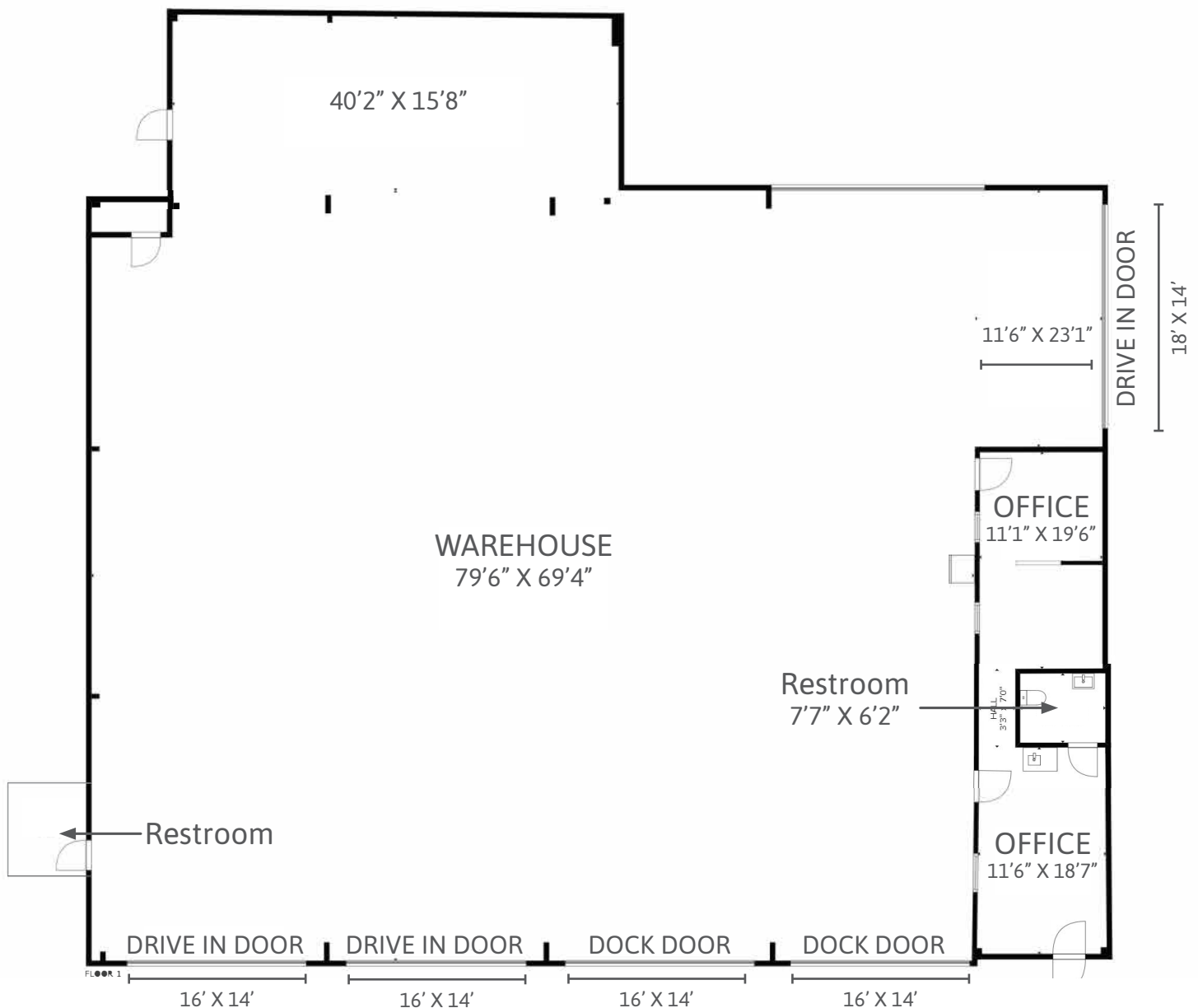
Bridge Commercial make no guarantees, representations or warranties of any kind, expressed or implied, including warranties of content, accuracy and reliability. Any interested party should do their own research as to the accuracy of the information. Bridge Commercial excludes warranties arising out of this document and excludes all liability for loss and damages arising out of this document.

# 1039 LINCOLN AVENUE

## FLOOR PLAN



**BRIDGE**  
COMMERCIAL



View virtual floorplan:





# 1039 LINCOLN AVENUE

NORTH CHARLESTON, SC | 29405



**BRIDGE**  
COMMERCIAL



#### Distance from Site:

I-526:	0.2 Miles
I-26:	3 Miles
N Charleston Terminal:	1.5 Miles
Veterans Terminal:	3 Miles
Boeing:	5 Miles
Mercedes-Benz:	12 Miles



#### FOR MORE INFORMATION, PLEASE CONTACT:

**JOHN BEAM**  
Senior Associate  
+1 843 810 6868

**BROOKS U. COURTNEY**  
Brokerage Associate  
+1 859 327 8749

**HAGOOD S. MORRISON**  
Vice President  
+1 843 830 9108

**HAGOOD MORRISON MBA SIOR**  
Executive Vice President  
+1 843 270 5219

Bridge Commercial make no guarantees, representations or warranties of any kind, expressed or implied, including warranties of content, accuracy and reliability. Any interested party should do their own research as to the accuracy of the information. Bridge Commercial excludes warranties arising out of this document and excludes all liability for loss and damages arising out of this document.